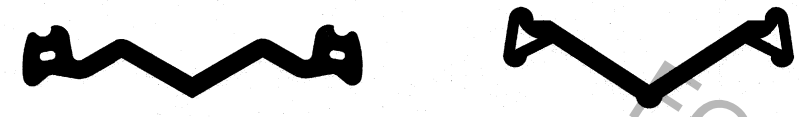
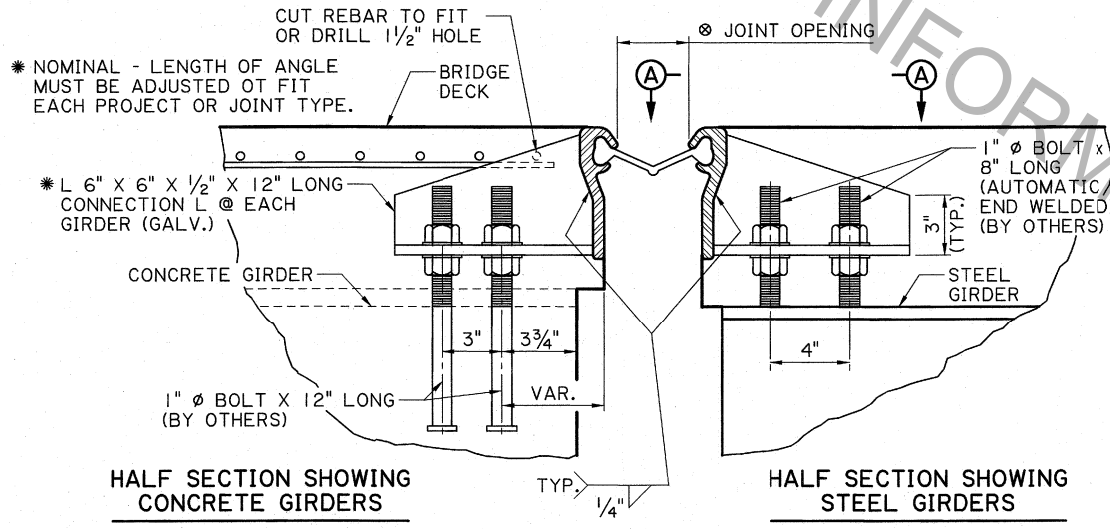


(CURB USE ONLY)

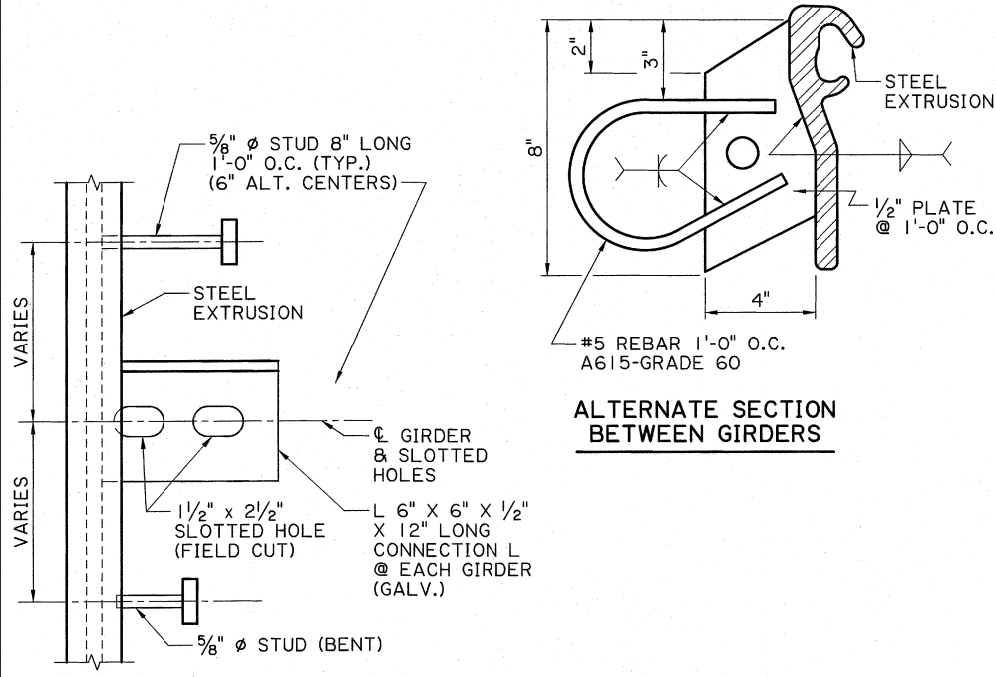
TYPICAL STEEL EXTRUSIONS (END DAMS)



TYPICAL NEOPRENE SEALS



TYPICAL SECTION AT GIRDERS

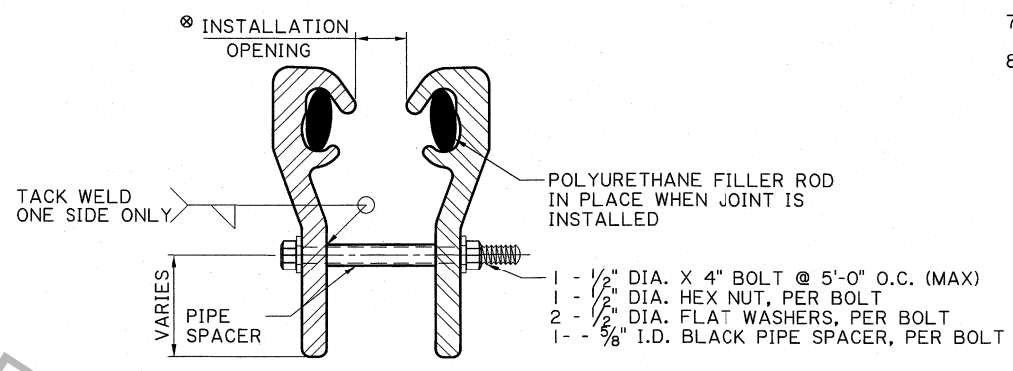


SECTION A-A

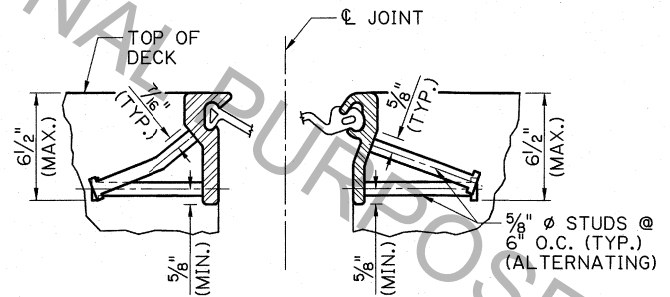
△ 3/4" ϕ x 2'-6" SMOOTH ROD WITH TOP 6" THREADED w/ 2-HEX NUTS & 2-CUT WASHERS. BOTTOM OF ROD EMBEDDED 3/2" INTO RISER WALL AND CAPPED WITH 1/2" THICK CARDBOARD OR OTHER WEAK COMPRESSIBLE MATERIAL.

END DAM INSTALLATION PROCEDURE:

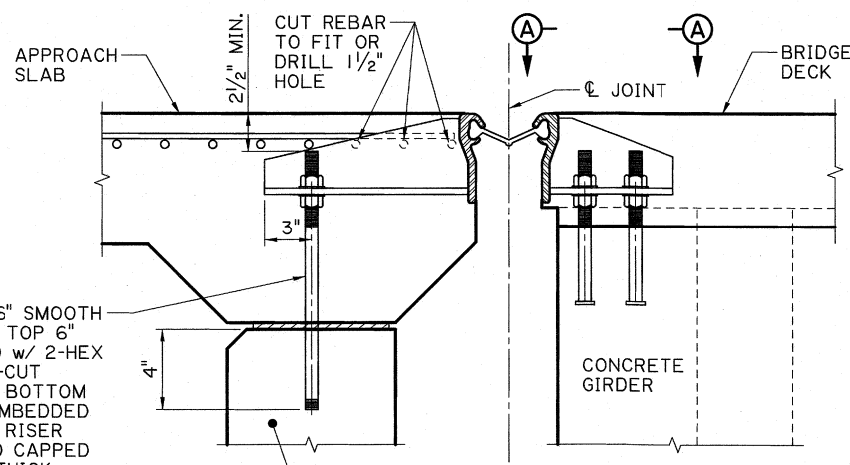
1. PLACE END DAM ASSEMBLY AS A UNIT, WITH PIPE SPACERS AND BOLTS IN PLACE.
2. ADJUST ASSEMBLY TO CORRECT VERTICAL POSITION AND JOINT INSTALLATION OPENING. TIGHTEN INTO PLACE USING ANCHOR BOLTS IN GIRDERS.
3. REMOVE 1/2" DIA. INSTALLATION BOLT BETWEEN END DAMS, PIPE SPACER TO REMAIN.
4. CAST DECK.
5. REMOVE PIPE SPACER AFTER 24 HRS OF DECK CURING.
6. REPAIR ANY DAMAGE TO EXPOSED GALVANIZATION.



END DAM SHIPPING AND INSTALLATION ASSEMBLY
(ANCHOR ANGLES AND ANCHOR STUDS NOT SHOWN)



TYPICAL HALF-SECTIONS BETWEEN GIRDERS



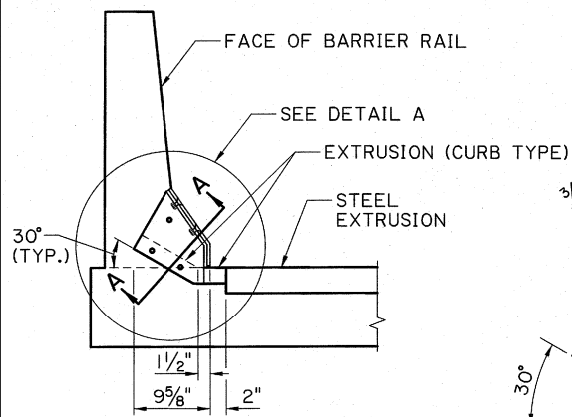
TYPICAL SECTION AT BRIDGE END (@ GIRDERS)

NOTES:

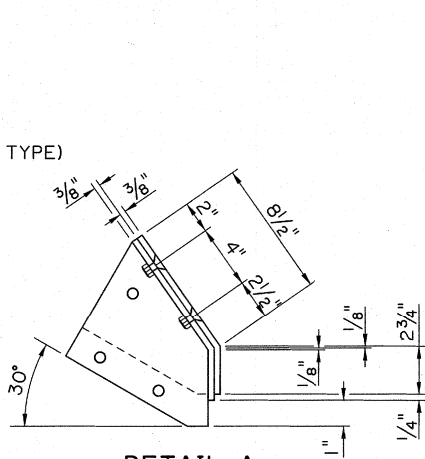
1. JOINT FABRICATION AND CONSTRUCTION SHALL BE IN ACCORDANCE WITH SECTION 815 OF THE DOTD STANDARD SPECIFICATIONS.
2. THE MANUFACTURER'S RECOMMENDED CONSTRUCTION METHODS SHALL BE FOLLOWED.
3. A MANUFACTURER'S REPRESENTATIVE SHALL BE PRESENT DURING THE INSTALLATION OF THE JOINT.
4. SHOP DETAILS OF JOINTS SHALL BE SUBMITTED FOR REVIEW PRIOR TO FABRICATION.
5. SHIP STEEL END DAMS IN ACCORDANCE WITH THESE DETAILS.
6. POLYURETHANE FILLER ROD SHALL BE PLACED IN STEEL EXTRUSION'S CAVITY PRIOR TO SHIPMENT. THIS ROD SHALL BE REMOVED ONLY WHEN THE NEOPRENE SEAL IS TO BE INSTALLED IN PLACE.
7. FOR WELDS, CONFORM TO SECTION 809 OF STANDARD SPECIFICATIONS.
8. WELDED SPLICES OF STEEL EXTRUSIONS SHALL BE SHOP SPLICES AND EACH PORTION OF THE EXTRUSION SHALL BE NOT LESS THAN 15 FEET IN LENGTH EXCEPT THAT ONE SECTION, NOT LESS THAN 4 FEET IN LENGTH WILL BE ALLOWED IN THE SHOULDER AREA IF REQUIRED TO MATCH THE ROADWAY CROSS SECTION. ALL SPLICES SHALL BE MADE SO AS TO OCCUR OUTSIDE THE WHEEL PATHS. (SEE DETAIL ON SHEET 2 OF 2.) IF A SECTION LESS THAN 15 FEET IS USED, THE CONNECTION STUDS WILL BE SPACED AT 9 INCH ALTERNATE CENTERS. ALL SPLICE LOCATIONS WILL BE SHOWN ON THE SHOP DRAWINGS. DRAWINGS WILL NOT BE APPROVED UNLESS THE LOCATIONS ARE DESIGNATED ON THE DRAWINGS. THE LOCATIONS MAY BE DESIGNATED WITH A +/- 6 INCH TOLERANCE. WELDED SPLICES ARE ALSO REQUIRED WHERE TWO DIFFERENT STEEL SHAPES ARE JOINED AT THE CURB AREA AND WHERE THE CURB UNITS ARE TURNED UP. WELDED SPLICES WILL BE BUTT SPLICES AND CARE SHALL BE TAKEN NOT TO ALLOW WELD METAL TO INVADGE THE GLAND CAVITY. WELD MATERIAL IN THE CAVITY WILL BE CAUSE FO REJECTION. CONNECTION STUDS WILL BE LOCATED 3 INCHES EITHER SIDE OF WELDED SPLICES.
9. JOINTS UP TO FIFTY-FOUR (54) FEET IN LENGTH SHALL BE DELIVERED TO THE JOB SITE IN ONE PIECE. JOINTS OVER FIFTY-FOUR (54) FEET IN LENGTH MAY HAVE PROVISIONS FOR A FIELD SPLICE IN THE STEEL EXTRUSIONS, PROVIDING THE SPLICE IS PERFORMED IN SHOP-LIKE CONDITIONS IN THE PRESENCE OF A STATE INSPECTOR AND MEET THE REQUIREMENTS OF NOTE 7 ABOVE. ALL OTHER WELDED SPLICES OF STEEL EXTRUSIONS SHALL BE SHOP SPLICES.
10. BEND STUDS PRIOR TO WELDING. NO FIELD BENDING OF STUDS WILL BE ALLOWED.
11. REPAIR DAMAGED GALVANIZED COATS IN ACCORDANCE WITH 811.08.
12. NEOPRENE SEALS SHALL BE MANUFACTURED AS A CONTINUOUS PIECE WITH ONLY ONE (1) SHOP SPLICE PER JOINT ALLOWED WHEN LENGTH EXCEEDS 50 FEET. THE NEOPRENE SEAL SHALL CONFORM TO 1005.05.1, WITH THE HARDNESS REQUIREMENT OF ASTM D2628 REVISED TO BE 55-5/+10. SEAL SHALL BE BONDED TO STEEL WITH A PRE-MIXED ADHESIVE LUBRICATING SOLUTION WHICH SHALL BE USED TO FACILITATE THE SEAL INSTALLATION. THIS ADHESIVE LUBRICANT SHALL BE SELECTED FROM THE DOTD APPROVED MATERIALS LIST. THE LUBRICANT SHOULD FLOW FREELY AND EVENLY COAT THE SEAL AND JOINT FACE. THE LUBRICANT SHALL COMPLETELY COAT THE SEAL AND STEEL EXTRUSION CAVITY WHICH REMAINS IN CONTACT.
13. 2'-6" LENGTH OF ROD IS APPLICABLE FOR CLEAR ROADWAY WIDTHS OF 24'-0" TO 44'-0" WITH ONE OR TWO-WAY TANGENT CROSS SLOPE. WIDER BRIDGES WITH TWO-WAY TANGENTS MAY REQUIRE A LONGER SUPPORT ROD.
14. SEE PROJECT PLAN JOINT DATA TABLE FOR DESIGN AND INSTALLATION REQUIREMENTS.
15. ANCHOR BOLT IN GIRDER WILL BE PAID FOR AS PART OF THE GIRDER. ANCHOR BOLT IN APPROACH SLAB SUPPORT WALL WILL BE PAID FOR UNDER THE STRUCTURAL METALWORK (ANCHOR BOLTS) PAY ITEM. MEASUREMENT AND PAYMENT OF OTHER END DAM AND SEAL ELEMENTS WILL BE IN ACCORDANCE WITH SECTION 815.
16. JOINTS SHALL BE PAID FOR UNDER PAY ITEM SEAL EXPANSION JOINT (END DAMS AND PREFORMED NEOPRENE SEAL).

SHEET NUMBER	
DESIGNED	A. LANCASTER
CHECKED	K. KEMP
PARISH	
CONTROL SECTION	A. LANCASTER
STATE	
PROJECT	
REVIEWED	Z.Z. FU
SERIES #	1 OF 2
BY	
REVISION OR CHANGE ORDER DESCRIPTION	
NO.	
DATE	
<p>MISC. SPAN DETAILS SEAL EXPANSION JOINT END DAMS & PREFORMED NEOPRENE</p>	
<p>MISC. SPAN DETAILS (JOINTS)</p>	
<p>DOTD BRIDGE DESIGN</p>	

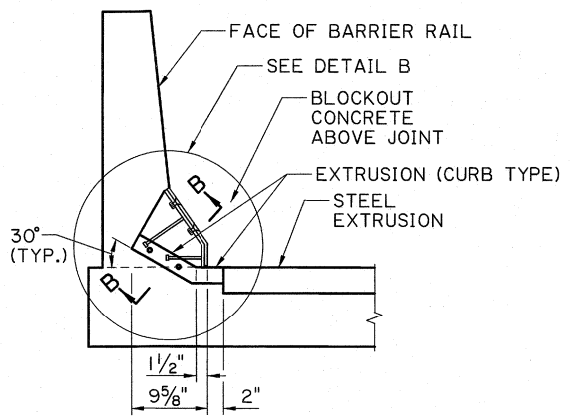
ADAM LANCASTER
License No. 35573
PROFESSIONAL ENGINEER
IN
CIVIL ENGINEERING
7/19/18



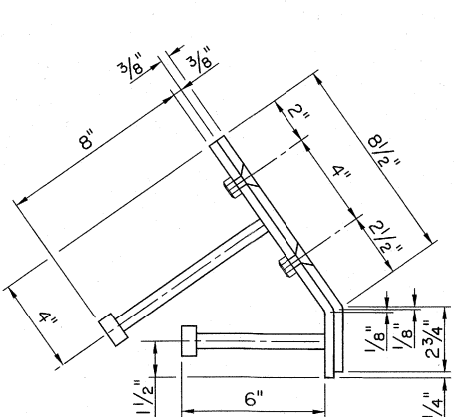
**F-SHAPE BARRIER SECTION
OPTION 1**
(STEEL EXTRUSION AT LOW SIDE OF DECK)



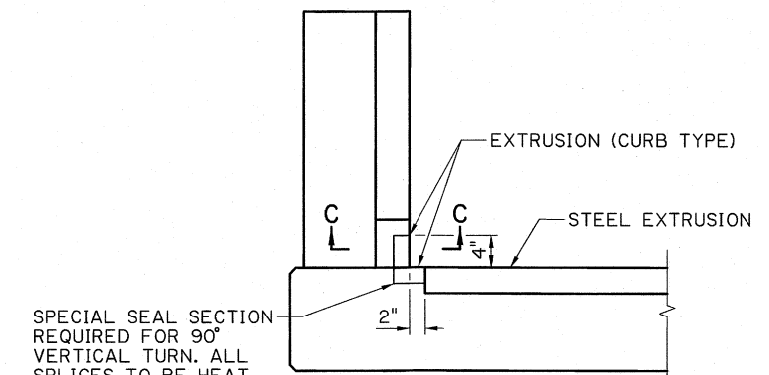
DETAIL A
(SEAL NOT SHOWN)



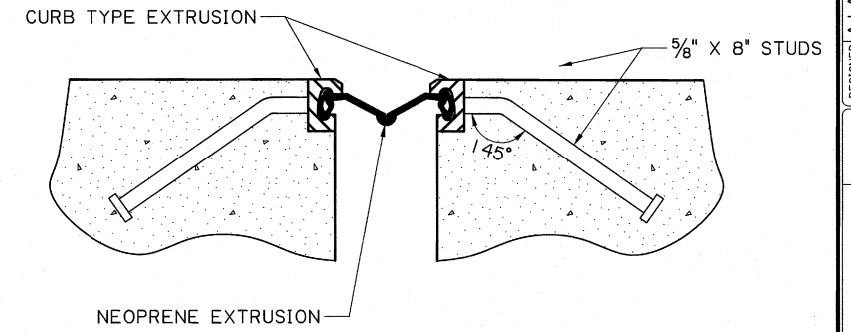
**F-SHAPE BARRIER SECTION
OPTION 2**
(STEEL EXTRUSION AT LOW SIDE OF DECK)



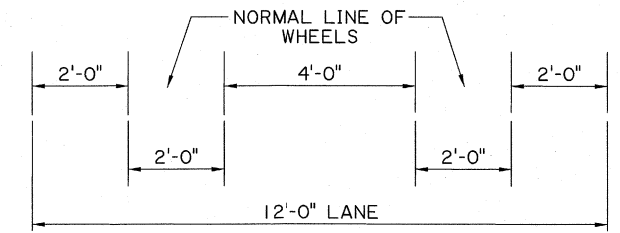
DETAIL B
(SEAL NOT SHOWN)



BARRIER SECTION
(QUAD BEAM SPANS @ END BENTS)
(LOW SIDE ONLY)

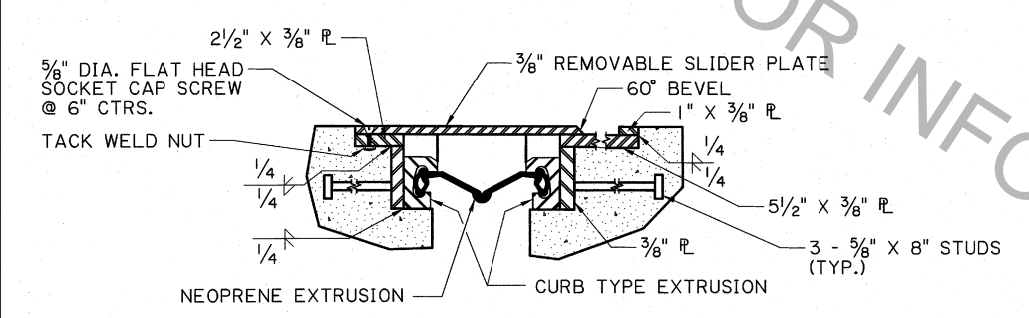


SECTION C-C

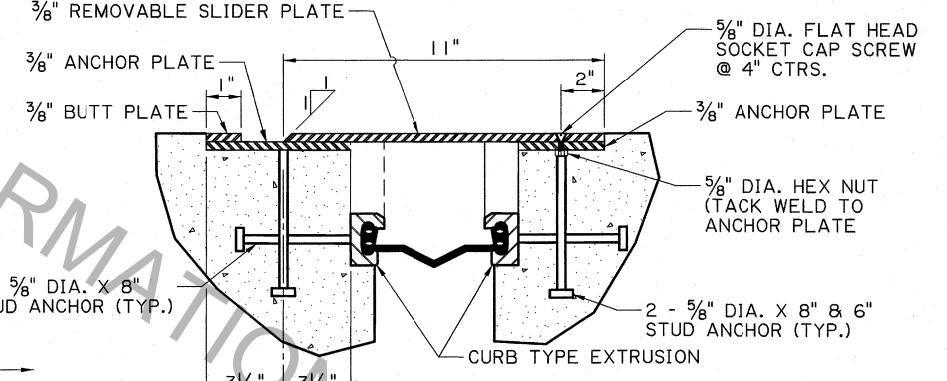


DIMENSIONS SHOWN ARE NORMAL TO ROADWAY WHEN JOINT IS PLACED ON SKEW THE DIMENSIONS SHOWN WILL VARY TO MEET THE SKEW DIMENSIONS ALONG THE CL OF THE JOINT.

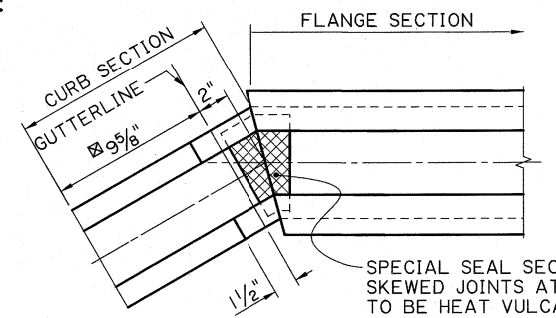
SPlice LOCATIONS



SECTION A-A

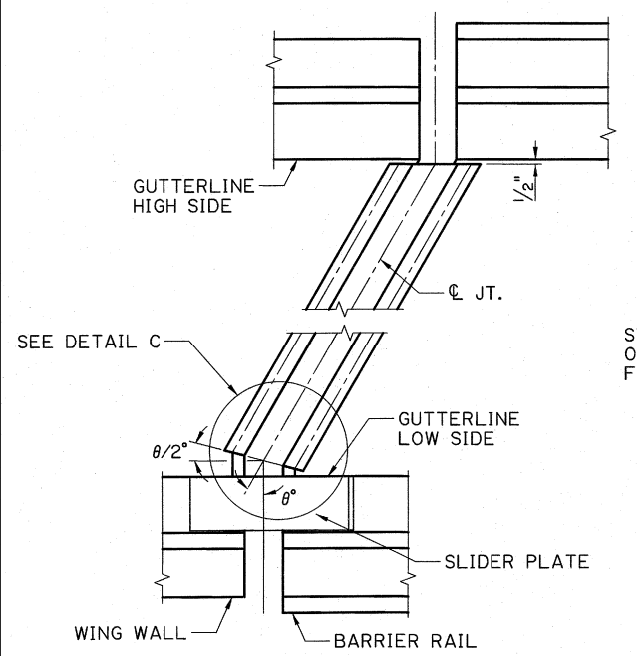


SECTION B-B

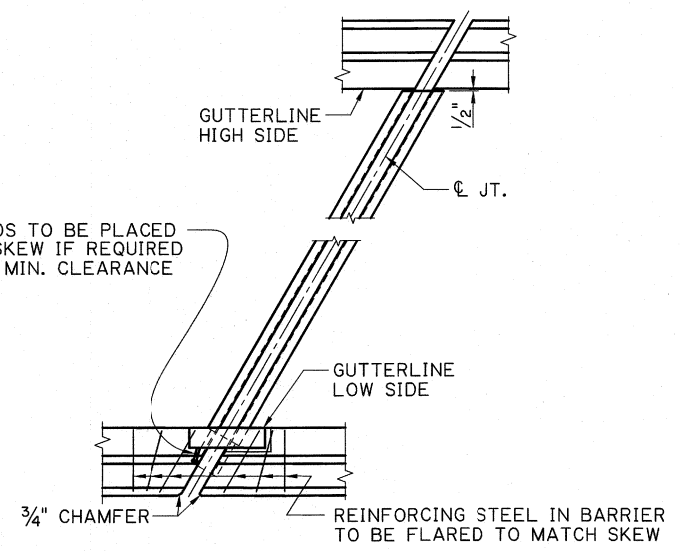


DETAIL C

☒ FOR QUAD BEAM SPANS, THIS DIMENSION SHALL BE THE HEIGHT OF THE EXTRUSION.



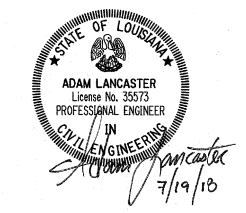
PART PLAN AT END BENTS



PART PLAN AT INTERIOR JOINT

NOTES:

- SEE SHT. 1 OF 2 FOR NOTES.
- SPlice LOCATIONS SHALL BE LOCATED SO AS NOT TO FALL IN THE "NORMAL LINE OF WHEELS" EXCEPT FOR CURB SECTIONS. ALL EXTRUSIONS SHALL BE A MINIMUM OF 15 FT. BETWEEN SPlices EXCEPT WHEN NOTED OTHERWISE ON THE SPAN SHEET.



SHEET NUMBER	PARISH	CONTROL SECTION	STATE PROJECT
DESIGNED A. LANCASTER	CHECKED K. KEMP	DRAWN A. LANCASTER	REVIEWED Z.Z. FU
SERIES # 2 OF 2	BY	DATE	NO.
REVISION OR CHANGE ORDER DESCRIPTION			
MISC. SPAN DETAILS			
SEALED EXPANSION JOINT			
END DAMS & PERFORMED NEOPRENE			
MISC. SPAN DETAILS (JOINTS)			
DOTD BRIDGE DESIGN			